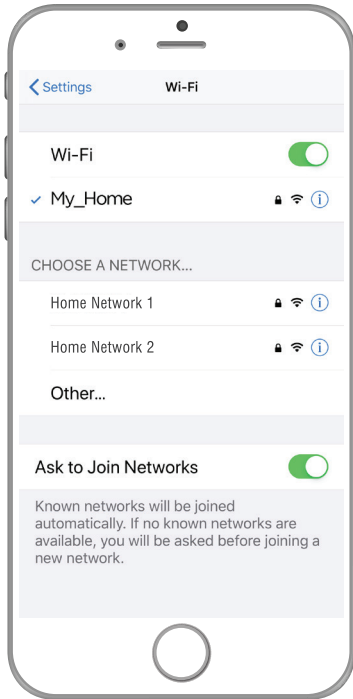


# CONNECT TO YOUR HOME WIFI AND PAIR WITH YOUR DIY SMART WIFI DROPLET CAMERA

**BEFORE YOU BEGIN PLEASE DOWNLOAD AND REGISTER THE BRILLIANTSMART APP.**

**For help or assistance go to [www.brilliantsmart.com.au](http://www.brilliantsmart.com.au)**



**Enable your Wifi network on you mobile device making sure to select 2.4GHz frequency network if your home network supports dual band frequencies. i.e. 2.4GHz or 5GHz.**

**It's important that you connect to 2.4GHz Frequency. Please disable or unselect the 5GHz Frequency in home WiFi network if able. This can be re. selected or enabled once devices have been paired to the BrilliantSmart app.**

*Note\* if you are not familiar with this procedure you may need to contact your internet service provider for some assistance.*



Before installation of your BrilliantSmart device in the location you desire, please check WiFi signal has minimum of 2 bars strength on your mobile device WiFi icon.

If poor WiFi signal, upgrading your router, installing an AP(Access Point) or Wifi Extender may be needed. (Sold separately)



Your Smart Droplet camera is DIY and can be installed using bracket for ceiling/wall mounting or sit on any flat stable surface. (Indoor Use Only! Do not use in wet areas).

Your Smart Droplet has the ability to record on to a memory card. Before powering up device please insert the MicroSD memory card (upto 128Gb Max – not included) into the MicroSD Slot.

## When installing and positioning your smart cameras be aware of State, Territory and local surveillance and monitoring laws.

Please follow this link for more information regarding privacy laws and cameras:

<https://www.oaic.gov.au/privacy/your-privacy-rights/surveillance-and-monitoring/security-cameras>

### HOW TO INSTALL

#### STEP 1

Place device on any safe and secured surface.



#### STEP 2

Connect USB cable into device and adaptor. Plug adaptor into power outlet. Continue with WiFi setup.



### TECHNICAL SPECIFICATIONS

**Model No:** 21801/05

**Lens:** HD 1080 2.0 Megapixel camera

**View Angle:** Fish Eye wide angle display

**Motion detection and tracking:** Sends notification to phone

**Sound detection:** Sends notification to phone

**Memory storage:** Micro SD card up to 128GB – Class 10 minimum (not included)

**Day vision:** Up to 12 meters distance max

**Night vision IR:** Up to 5 metres distance max

**Audio:** High quality two-way audio

**Adaptor:** 220V–240V AC 50Hz  
Output: 5V DC, 1000mA (not included)

**Weather resistant rating:** IP20 – Indoor Use Only (Do not use in wet areas)

**Security:** Mac Encryption; WEP/WAPI/TKIP/AES

**WiFi Standard:** 2.4GHz IEEE802.11b/g/n

**System Req's:** iOS 8.0 or higher, Android 4.1 or higher

**Warranty:** 1 year

**Included in the box:** Smart Droplet WiFi Camera, Mounting Base (with magnet) x 1, USB Adaptor x 1, USB Cable x 1, Screw x 3, Rawl plug x 23, installation manual x 1.

# BRILLIANT SMART APP - DROPLET START UP

1. On power-on Red LED indicator will be solid, after 20 seconds you will hear a prompt **'Please setup network connection'** come from the Device. Indicator will now flash rapidly. This is now fully initialised ready for pairing to the BrilliantSmart app. *If device does not make any sound or tone after 20 seconds of power-on, please press and hold the reset switch for 5 secs until you hear 3 chimes. Release reset switch and wait for 25 seconds for initial prompt and the indicator to start flashing.*

2. Once your Smart camera has been safely installed, open your Brilliant Smart App that you have previously registered and setup.

3. If you are connecting a smart device for the first time press **'Add Device'** or if you are adding another smart device press the plus sign **'+'**.

4. Next select the type of device you wish to add. If you're connecting a Smart WiFi Camera, select **'Smart Camera'**. *Icons may differ depending on your phone or tablet or operating system.*

5. Select – **'Make sure the indicator is flashing quickly or a prompt tone is heard'** (this is to verify device is in pairing mode). Select **'Next'**.

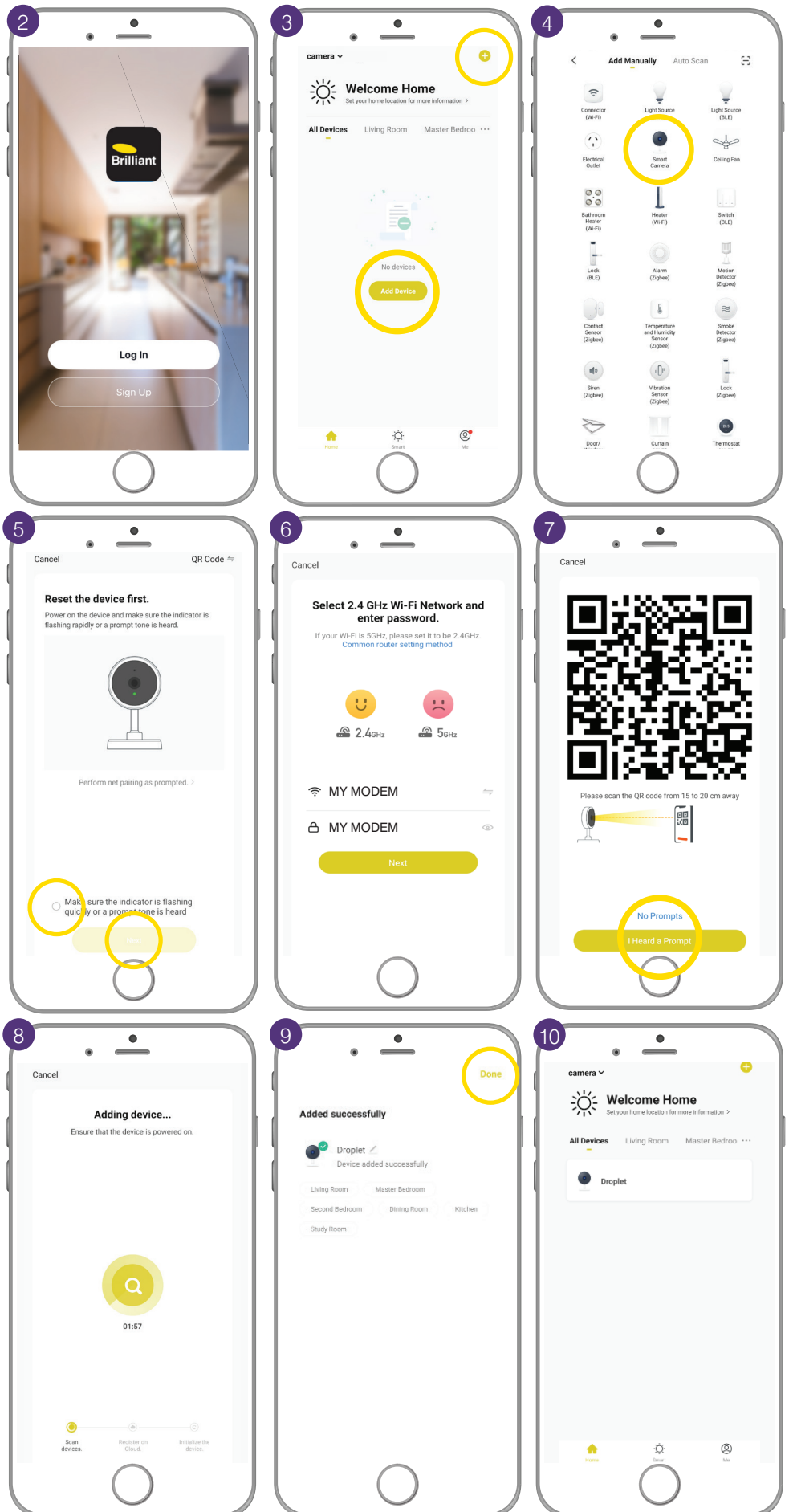
6. Enter your 2.4GHz home network and enter your WiFi password. *Note\* for first time users you may need to search for your network and add password. Once paired the BrilliantSmart app will save this information - this is private and confidential with no access from third parties.*

7. Once connected to your home WiFi, scan the **'QR Code'** with smart phone camera. Hold **'QR Code'** on your phone or tablet, approx. 20 cm in front of the Smart Droplet camera lens (facing the smart camera). Wait for chime then select **'I Heard a Prompt'** Smart Droplet Camera will now start connecting to app.

8. Wait until 100% complete.

9. Once connected you'll get a menu **'Added successfully'**. Select the room your device is to be located. You can click on the pen to change the device name, then press **'Done'**.

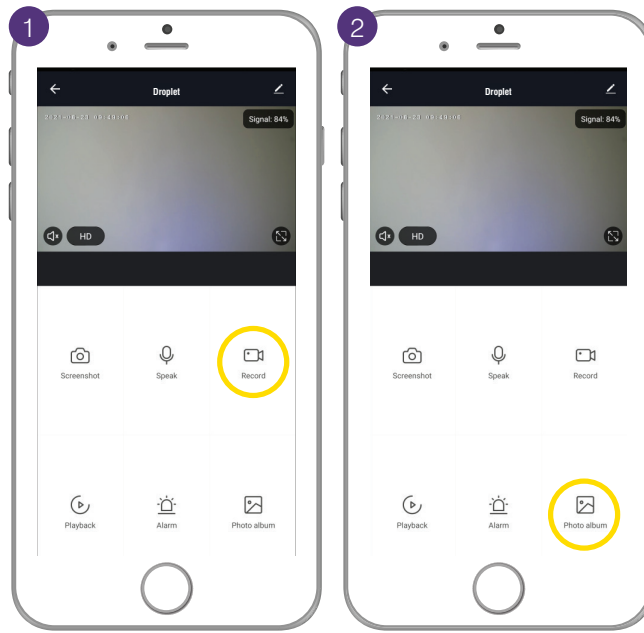
10. The smart device can now be controlled by the BrilliantSmart app.



## RECORDING (WITHOUT MICROSD)

When using the BrilliantSmart app, you will be able to record directly onto your mobile smart device i.e. smart phone/tablet/lpad. This will be a live recording meaning the BrilliantSmart App must be open and viewing the image from the camera.

1. Press **'Record'** – this will record directly to your internal smart device storage. Press record to stop recording.
2. For viewing recorded files select **'Photo album'**.



## RECORDING (WITH MICROSD)

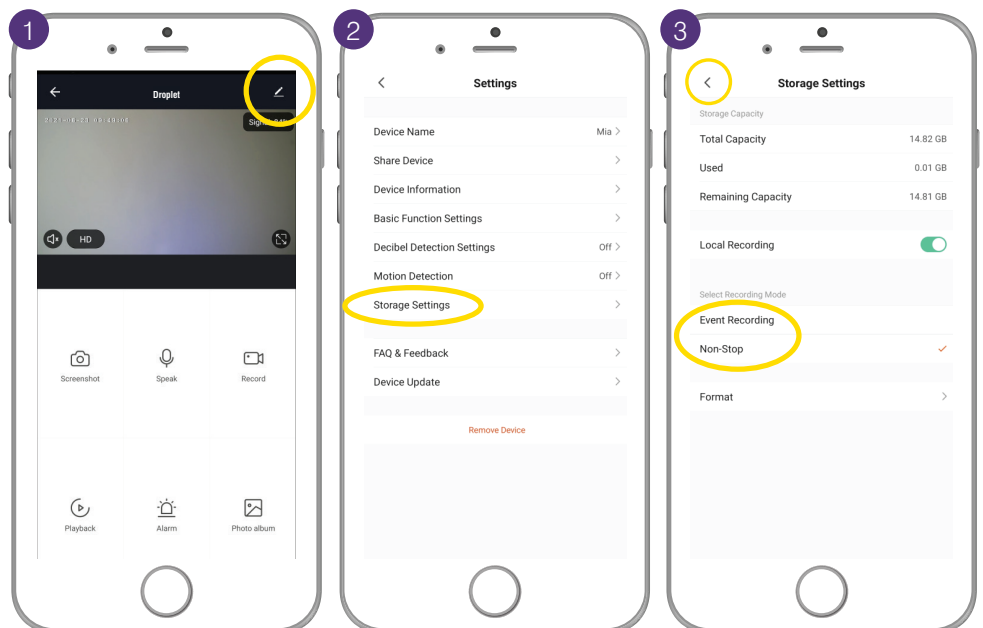
Your smart Camera along with a MicroSD memory card (128Gb max class 10 – sold separately) will be able to record locally.

This means your recordings are private and confidential and only you can view them using the BrilliantSmart app or remove the MicroSD memory card for ease of viewing on your PC/Laptop/Mac if files are needed to be downloaded for incident reports to the authorities.

With the Smart Droplet Camera you are able to choose between 'Event Recording' (camera will only record when triggered) or 'Non-stop' (recording continuous once camera is powered)

This can be set in the settings function of the Smart Camera.

1. Select **Pen Icon**
2. Select **'Storage Settings'**
3. Select Desired Recording mode **'Event Recording'** or **'Non-Stop'** then press back arrow to return to main user interface.

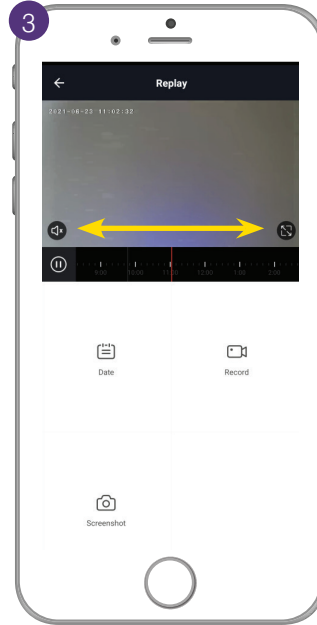
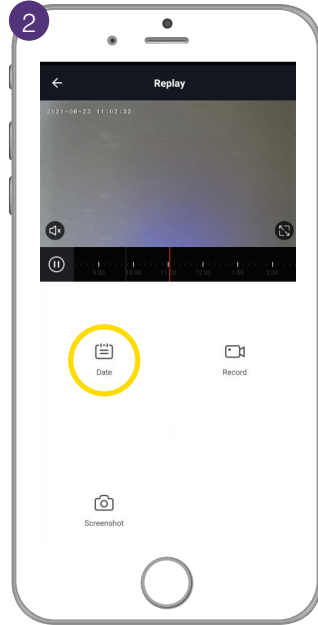
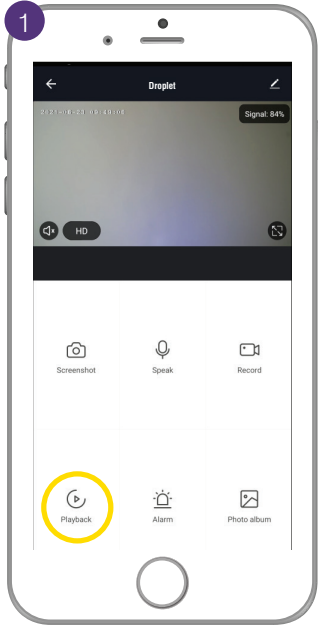


## TO VIEW RECORDINGS

To view the recordings please select the playback icon in the UI (User Interface – camera app screen)

Here you can select date recordings were saved and toggle/Slide between recordings.

1. Select **'Playback'**
2. Select **'Date'**
3. Slide/toggle between recording
4. Press **back arrow** to return to main user interface.



**Problem:**

LED indicator light not on or device not powering up.

**Possible Cause**

- A. Fuse or circuit breaker has blown.
- B. Loose wire connections to the unit.

**Suggested Solution**

- A. Check main and branch circuit breakers.
- B. Check all wire connections to the unit are secure & firmly.

**Problem:**

Indicator light is flashing blue or device is offline.

**Possible Cause**

- A. Device lost internet connection and unable to back online.

**Suggested Solution**

- A. Restart device.

**Problem:**

Unable to pair the device with smart app.

**Possible Cause**

- A Device not in pairing mode.
- B No Internet access.
- C Dual WiFi network modem.
- D Modem is too far away from the unit.
- E Smart App requires update.
- F Smart App not responding.
- G WiFi bandwidth not enough. Too many devices connected to the WiFi modem.

**Suggested Solution**

- A Press and hold reset switch for 10 seconds until device LED indicator turns red and starts blinking. (Supplied reset pin may need to be used for models with internal reset switch).
- B Ensure WiFi network is working and able to access internet connection. Advice to refresh WiFi modem by switch OFF then switch ON the power. If problem still persist, please contact your internet service provider.
- C Ensure your mobile device are connected to 2.4GHz network before start the pair process. Disable 5GHz temporarily until pairing is completed.
- D Advice to use WiFi extender to help keep the WiFi signal in range.
- E Check & install latest smart app update.
- F Re-install the smart app after removing the app from the mobile device.
- G Standard modem usually allows connection of 10 to 15 devices. If too many devices connected, we advise to upgrade the modem or use a WiFi MESH gateway/devices.

**Problem:**

Device in the app shown Offline.

**Possible Cause**

- A No Internet access.
- B Require refresh the smart app.
- C Smart device power turn on less than 1 minute.

**Suggested Solution**

- A Ensure WiFi network is working and able to access internet connection.
- B At home screen, pull down the screen to refresh the app. Or close the app and start again in your mobile device.
- C When smart device power on it will take up to 1 to 2 minutes to connect to the cloud server. Wait at least 1 to 2 minutes and refresh the home screen.

For any other problems connecting your smart device to BrilliantSmart app please visit: [www.brilliantsmart.com.au/faqs](http://www.brilliantsmart.com.au/faqs)



To see more features or FAQs please scan the QR code, go to [www.brilliantsmart.com.au](http://www.brilliantsmart.com.au) or visit our Youtube channel to view our how to videos [www.youtube.com/c/Brilliant\\_au](http://www.youtube.com/c/Brilliant_au)