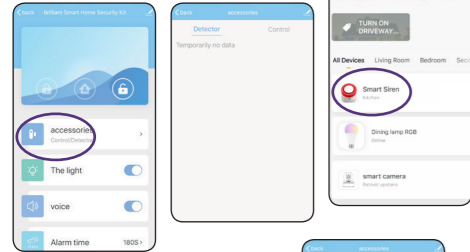


- Once connected you'll get a menu **'Adding device succeeded'**. Select the remote device and press **'Done'**. You can click on the pen to change the device name.

Adding the accessories to the Smart WiFi Siren via Remote Frequency (RF).

- Select the Smart Siren.
- Select **'accessories'** to add the devices via RF.

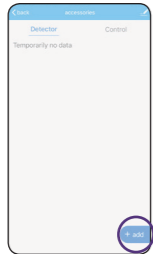
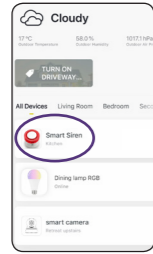
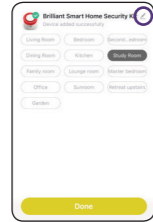


The RF accessories may automatically connect and will appear in the accessories list.

If the accessories list is empty please connect each one individually.

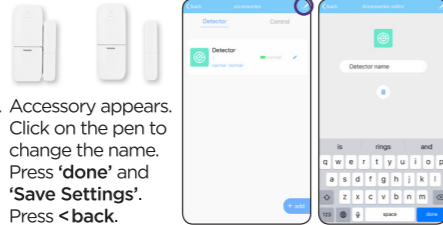
Add the magnetic reed switch

- Press the **'add'** icon.



7

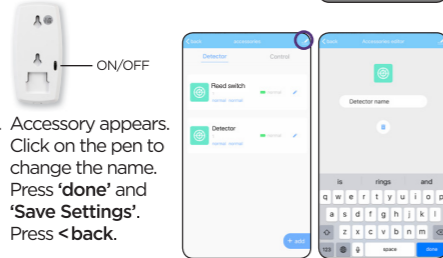
- Press **'confirm'**.
- To trigger the RF connection, put the reed switch together then move the magnet away at least 20mm. The siren flashes 3 times.



- Accessory appears. Click on the pen to change the name. Press **'done'** and **'Save Settings'**. Press **<back>**.

Add the PIR sensor

- Press the **'add'** icon.
- Press **'confirm'**.
- To trigger the RF connection, turn on the 'ON' switch on the back of the sensor. The siren flashes 3 times.

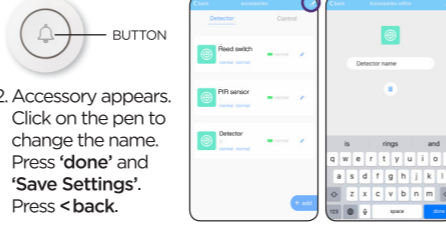


- Accessory appears. Click on the pen to change the name. Press **'done'** and **'Save Settings'**. Press **<back>**.

8

Add the Doorbell

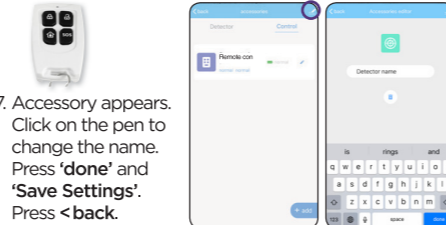
- Press the **'add'** icon.
- Press **'confirm'**.
- To trigger the RF connection, press the doorbell button. The siren flashes 3 times.



- Accessory appears. Click on the pen to change the name. Press **'done'** and **'Save Settings'**. Press **<back>**.

Add the Remote Control

- Select **'Control'**
- Press the **'add'** icon.
- Press **'confirm'**.
- To trigger the RF connection, press the home button. The siren flashes 3 times.



- Accessory appears. Click on the pen to change the name. Press **'done'** and **'Save Settings'**. Press **<back>**.

Go to www.brilliantsmart.com.au for full instructions and features.

9

Warranty

Brilliant Lighting warrants this product against defects in manufacture and workmanship for a period of 1 year from date of purchase. Warranty does not include damage or loss arising from incorrect installation, operation or maintenance of this product, damage caused through modification, or incorrect installation.

Our goods come with guarantees that cannot be excluded under the Australian Consumer Law. You are entitled to a replacement or refund for a major failure and compensation for any other reasonably foreseeable loss or damage. You are also entitled to have the goods repaired or replaced if goods fail to be of acceptable quality and the failure does not amount to a major failure.

Any claim under this warranty must be made within 1 year of the date of purchase of the product.

Refer to our website brilliantlighting.com.au for terms and conditions and warranty claims.

This warranty is given by:

Brilliant Lighting (Aust) Pty. Ltd.
 ABN 37 006 203 694
 956 Stud Road Rowville, VIC 3178
 Phone: 03 9765 2555
 Email: warranty@brilliantlighting.com.au

MADE IN CHINA

Disposal

Please dispose of this packaging material thoughtfully.

Please dispose of this product thoughtfully once it has passed its useful life. When your smart device comes to the end of its life or you choose to update or upgrade it, please do not dispose of it with your normal household waste. Please recycle where facilities exist. When disposing of this fitting, check with your local authority for suitable options.

2115 04/20

10

NB: BrilliantSmart app screens may differ due to application updates & improvements.

Troubleshooting

Problem:
 Cannot link smart device with BrilliantSmart app

Possible Cause	Suggested Solution
1. Modem signal weak	Place device and modem closer together
2. Router/modem/smart phone firewall is enabled	Disable firewalls on all devices
3. Internet connection is down	Contact your provider
4. BrilliantSmart app not installed correctly	Remove app and re-install

For any other problems connecting your smart device to BrilliantSmart app please visit:
www.brilliantsmart.com.au/faq

Brilliant Lighting

956 Stud Road
 Rowville Vic 3178 Australia

www.brilliantlighting.com.au

Australian Sales

T 03 9765 2555
 T 1800 817 754 (interstate only)
 F 03 9763 0277
 E warranty@brilliantlighting.com.au

New Zealand Sales

T 09 974 9618
 E sales@brilliantlighting.co.nz



USER MANUAL

11

Box Content

- Smart Siren with built-in rechargeable battery x 1
- 5V AC/DC power adaptor x 1
- USB/Micro USB plug and cord x 1
- Doorbell with CR2032 3V battery x 1
- Remote Control with CR2032 3V battery x 1
- PIR Sensor with 9V battery x 1
- PIR Sensor bracket x 1
- Door/Window Magnetic Reed Switch with 12V 23A battery x 1
- Reset Pin x 1
- 3M Double Sided Tape
- Screws x 4
- Rawl Plugs x 4
- User Manual x 1

Technical Specifications

Model: 21518

Supply voltage: 230/240V AC 50Hz

Weight of product: 0.71kg

Accessories: Detectors communicate by Radio Frequency RF 433MHz (approx 30m range)

Warranty: 1 Year

Security: Mac Encryption; WEP/WAPI/TKIP/AES

WiFi Standard: IEEE802.11b/g/n

System Req's: iOS 8.0 or higher, Android 4.1 or higher

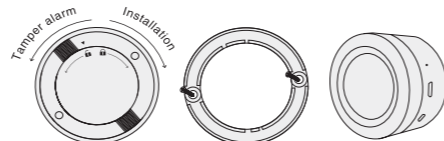


Installation

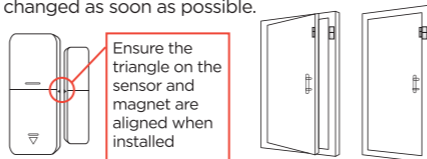
BEFORE INSTALLATION, PLEASE CHECK THAT THE LOCATION OF THE SMART SIREN IS WITHIN RANGE OF YOUR HOME WIFI AND SIGNAL IS STRONG.

IT IS RECOMMENDED THAT YOU ENSURE THE ACCESSORIES ARE ALL IN WORKING ORDER AND CONNECTED/PAIRED TO THE SMART WIFI SIREN BEFORE INSTALLATION. PLEASE ENSURE THE PLASTIC BATTERY TAB IS REMOVED BEFORE USE.

1. The **Smart WiFi Siren** can be placed anywhere in the house connected via USB to a computer or to a powerpoint using plug & cord provided.
2. Plug the micro USB plug into the Smart WiFi Siren micro USB port, then plug the USB plug into the AC/DC power adaptor. Ensure the plugs are firm in place. The Smart WiFi Siren comes complete with a battery. Plug in the AC/DC power adaptor into the power outlet.
3. To install, rotate (anti-clockwise) the outer back plate of the Smart siren to unlock and remove. Screw the back plate in place. Push the siren onto the back plate and rotate clockwise to lock .



4. The **magnetic reed switch** can be installed on any interior window or interior door with the 3M double sided tape. The gap between the sensor and magnet (when installed) should be less than 10mm.
5. After installation, the red indicator light on the sensor comes on when the door/window is opened. When the battery is low the indicator light will flash when it is triggered and should be changed as soon as possible.



6. The PIR sensor is provided with a bracket and screws and plugs, to attach to a wall or ceiling.
7. Locate the desired location and mark the 2 screw holes by using the bracket as a guide.
8. After installing the bracket, align the PIR detector mounting slot with the bracket and firmly slide in the PIR detector. Adjust the PIR detector accordingly.



9. The **doorbell** can be installed on any door with 3M double sided tape or screwed into position, or use as a portable bell. Before installation check the doorbell is within range of the siren. Press the doorbell to check the siren sounds a chime.
10. Remove the rear cover from the main unit and used it as a guide to mark 2 screw holes on the desired location. Screw the cover into position and press the doorbell back onto the cover.



Go to www.brilliantsmart.com.au for full instructions and features.

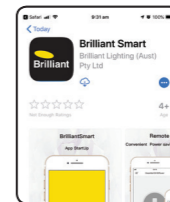
Connect to your WiFi

Ensure your mobile phone is connected to your 2.4GHz WiFi network.

Your mobile phone and your smart device needs to be within good signal strength range of your WiFi router.

Download the BrilliantSmart App

Please download the free BrilliantSmart app from the App store or Google Play store, or scan the QR code below.



Register the BrilliantSmart App

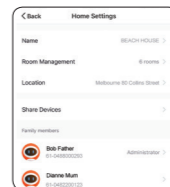
Open the BrilliantSmart app.

For new users, register a new account or if existing user, login with your user name and password.

Configure your BrilliantSmart App

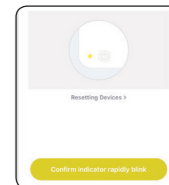
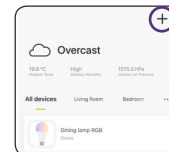
Setting up your Home

You can setup multiple homes or locations. Click **'Add Home'** button. Or Click on **'Home'** top left if you are adding or modifying details then **'Home Management'** to setup your home(s), add or rename routers and share devices.

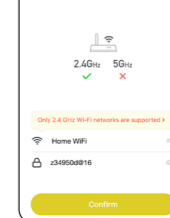


Add your Smart Device to your App

1. Turn on the power and your smart siren will ready for WiFi pairing. The LED indicator light beeps once then will start blinking. If the LED indicator light is not blinking then you need to reset the device to pairing mode by inserting the reset pin into the reset hole and hold the reset pin for about 5 seconds or until the red LED indicator light blink rapidly. Remove the reset pin. Wait for 3 to 5 seconds the red LED indicator light will start blinking.
2. Open the BrilliantSmart App, tap **'Add Device'** (if empty room) or **'+'** to add your Smart WiFi Siren.
3. Select **'Connector WiFi'** in the list of devices. If sensor LED indicator is blinking rapidly then press **'Confirm indicator rapidly blink'**.
4. Enter your home WiFi password.



Enter Wi-Fi Password



Connection will now begin.

