



# WIRELESS RF INTERCONNECT SMOKE ALARM

21926/05



Before first using your new Alarm, it is most important that you read and follow these instructions, even if you feel you are quite familiar with this type of product. Keep this document for future reference. In an emergency of a fire dial 000(Australia only) dial 111(New Zealand Only)

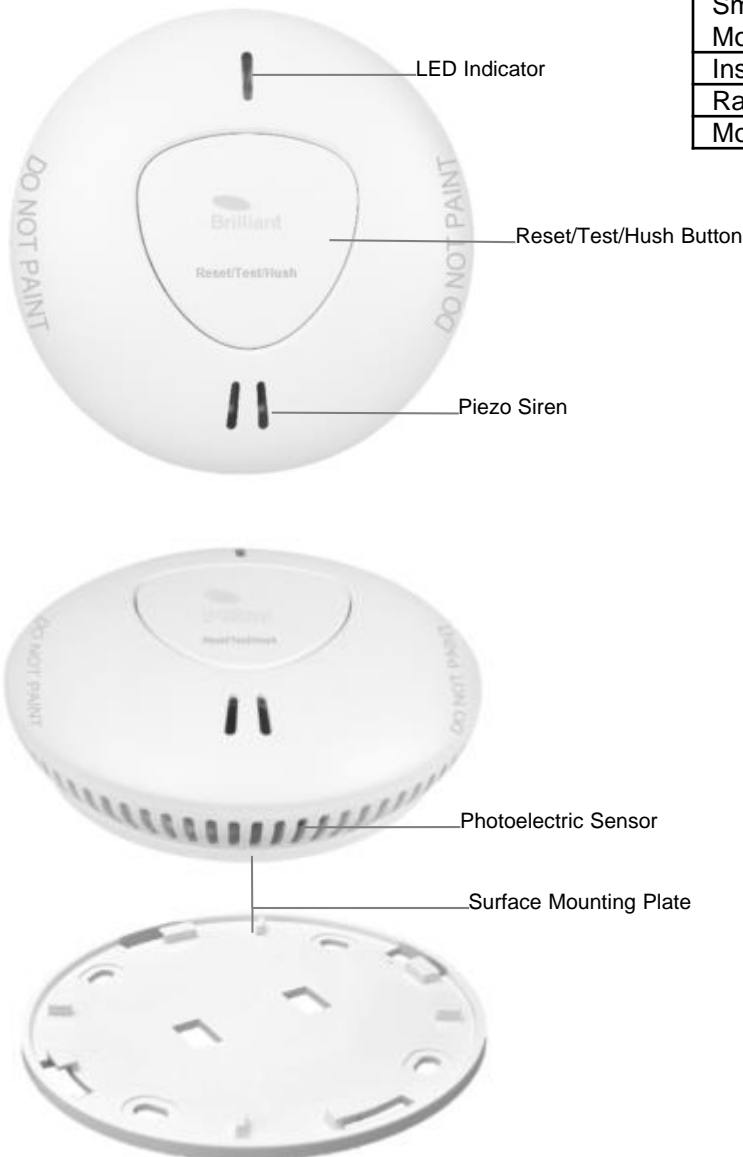
**This is a DIY Product**

## IMPORTANT for related operations, please read and keep this manual carefully.

This manual contains important information about the operation of your Wireless RF Interconnect Smoke Alarm. If you install a Wireless RF Interconnect Smoke Alarm for someone else, be sure to leave this instruction or a copy of it with the end user. The Wireless RF Interconnect Smoke Alarm use's Photoelectric sensor which is harmless to the end user. Photoelectric Smoke alarm's are effective in detecting smoke, as the smoke passes through the internal filter and interrupts the Photoelectric sensor beam it will enable the 85dB Piezo Siren to notify any occupants there is a fire.

**WARNING: WIRELESS RF INTERCONNECT SMOKE ALARM MUST NOT BE MODIFIED OR TAMPERED WITH.**

Gift box Contents	Quantity
Wireless RF Interconnect Smoke Alarm with Surface Mounting Plate	1
Instructions	1
Rawl Plugs	2
Mounting Screws	2



Contents	Page
Introduction	1
Specifications	2
Functions	2
Installation Location	3
Locations to Avoid	3
Installation	4
Testing	5
Interconnection Mode Pairing Setup	5
Testing Interconnectivity	6
Clear Interconnection Pairing Mode	6
Fire safety	7
Troubleshooting	8
Warranty	9



# WIRELESS RF INTERCONNECT SMOKE ALARM

## 21926/05

SPECIFICATIONS	
Standard	AS 3786:2014
Smoke Detection Type	Type A - (Photoelectric)
Signal Pattern	ISO 7731
Alarm Sound Level	>85dB/3m
Working Voltage	DC 3V Lithium *10yr Life Battery (not replaceable)
Standby Current	<10uA
Alarm Current	<60mA
Low Voltage threshold	2.6V
Operation Temperature	5 °C – 40 °C
Ambient Humidity	5 – 99% RH
RF Frequency Range	433 MHz
Antenna Gain	2dB
Max Radio Transmission Power	13dB
No.of device's Interconnectable	22 (Max)

## FUNCTIONS

Initialization	
Normal	Green LED flashes once Approximately every 55 seconds
Alarm (Fire Detected)	Once smoke is detected, LED Indicator will rapidly flash Red and Piezo Siren will sound. If same Alarm is in an Interconnected Network, the Alarms RF module will send a signal and trigger multiple Interconnected Alarms within 9 seconds and all Interconnected Alarms Piezo Siren will sound. (Note* Only the detecting Interconnect Smoke Alarm LED Indicator will flash and sound – all others will sound only.)
Mute (Fire Detected)	Once alarm is activated, press the Reset/Test/Hush button of Alarm of the detection site to mute Alarm. Device is still active and is only muted for short period of time. If Other interconnected alarms triggered, these will be muted once the detected alarm is muted.
Fault	The LED Indicator flashes Red twice every 60 seconds accompanied with 2 beep's from the Piezo Siren
Low battery	If battery voltage of Smoke Alarm is below 2.6volts, LED Indicator will flashes RED approximately every 60 seconds accompanied with a beep from Piezo siren. If this occurs, please replace the smoke alarm.
Test	Press the RESET/TEST/HUSH button, and the device will prompt (alarm, fault and low voltage) according to the current status. When testing all interconnect Smoke alarms, the alarms will sound and all LED indicators will flash. In test mode all devices will need to be silenced individually by pressing the Reset/Test/Hush button



# WIRELESS RF INTERCONNECT SMOKE ALARM

## 21926/05

### Important Information

It's important to have working smoke alarms throughout your home and ensure all smoke Alarms are installed correctly. Although this is a DIY product it is always best to seek the advice from your Local Government and/or Fire Authority to obtain correct installation procedures and placement of any smoke detection device.

**FIRE SAFETY PRACTICE** - discuss with all family members to develop and practice regularly a emergency evacuation plan. If the Interconnect Smoke alarm sounds or the alarm pre indicates:

- Let everyone hear the sound of the Carbon Monoxide alarm and understand the meaning of the sound.
- If you can ensure your own safety and the site is controllable, you can evacuate to an open and safe area after cutting off the source.
- Determine the exit of each room and the escape route from each exit to the outside.
- If the doors and windows are closed, the doors and windows shall be opened immediately to circulate air.
- Identify safe meeting places for all members outside the building.

### What Is Interconnect?

This product is an interconnect device. Interconnect is a term where a group of devices, more than 1 device, can be Linked/Paired together so when a single unit in that group is triggered this will send a remote frequency(RF) signal to the other devices in the group and activate all devices, alerting the occupants of possible danger. i.e. Fire, high Carbon Monoxide levels, etc...

An example of this is if you have 3 Brilliant Lighting interconnect devices i.e. 3 x interconnect smoke alarms 21926/05 all placed in different rooms of your house. When one is triggered this will send a RF signal and trigger the other two. All three will be activated will help help the occupier in the building that there is a possible emergency and to evacuate the area or premises.

The Brilliant Lighting Interconnect Smoke Alarm can be paired to a total of **22** Brilliant Lighting Interconnect devices.

Please see the below list of Compatible Interconnect devices:

**21926/05 WIRELESS RF INTERCONNECT SMOKE ALARM**  
**21927/05 SMART WIRELESS RF INTERCONNECT SMOKE ALARM\***

**21929/05 CARBON MONOXIDE W/DIGITAL DISPLAY ALARM**  
**21930/05 INTERCONNECT CARBON MONOXIDE ALARM**

Note\*: placement is crucial of all devices as local conditions of the premises i.e. , walls, floors, ceilings can and may block or hinder RF signal resulting in no interconnect activation or delayed interconnect activation to devices.

Please consult this manual and/or your local government for correct placement and fitment to Australian/New Zealand standards.

**DO NOT PAINT** : Brilliant Lighting Interconnect Smoke alarms **MUST NOT** be painted on or over. This may hinder the function of this Device. If painting is to be done on the surface of which the product is or to be installed, please remove device. Once paint is dry then replace or install device as per these instructions. Note\* If device is painted this will void all warranty.

**\*21927/05 SMART WIRELESS RF INTERCONNECT SMOKE ALARM**

**Smart notification should not be relied on as a sole life saving function.**

**The app function for notification's will not warn the occupier or user if the establishments Wi-Fi network is turned off, malfunctioning or damaged and/or if the internet service has been interrupted from local conditions.**

### INSTALLATION LOCATION

*Note\*: This is a Guide only – Always seek professional advice from your local Government or emergency services.*

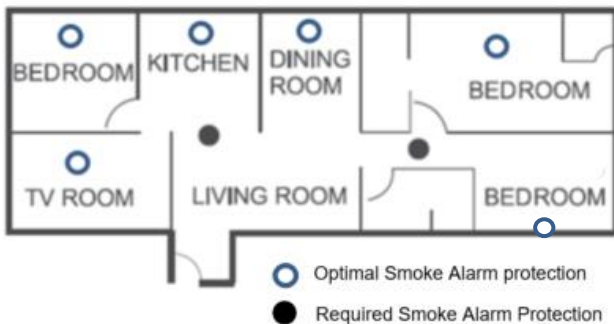
Smoke alarms to be:

- Installed inside or outside each sleeping area; and
- Installed on each storey in a multi-storey home, located in the path that people will use to evacuate.

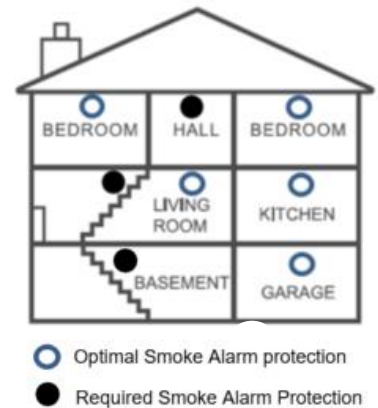
**Note\*** multiple smoke alarms are recommended for optimal protection from fire or smoke.

**ATTENTION: For optimum smoke detection, it is recommended that each smoke alarm is placed on the ceiling, close to the centre of the room, and at least 300mm(30cm) away from the wall. Smoke alarms MAY NOT operate in areas known as dead air space. This is where walls and ceilings meet. Keep away from installing in these areas.**

Single Story Dwelling



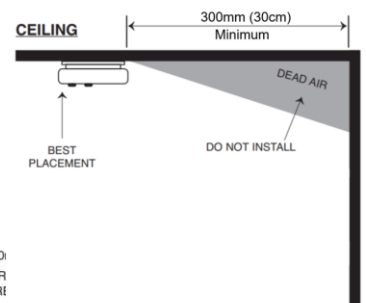
Double Story dwelling



### Locations to Avoid:

DO NOT install Wireless RF Interconnect Smoke Alarm in the following locations.

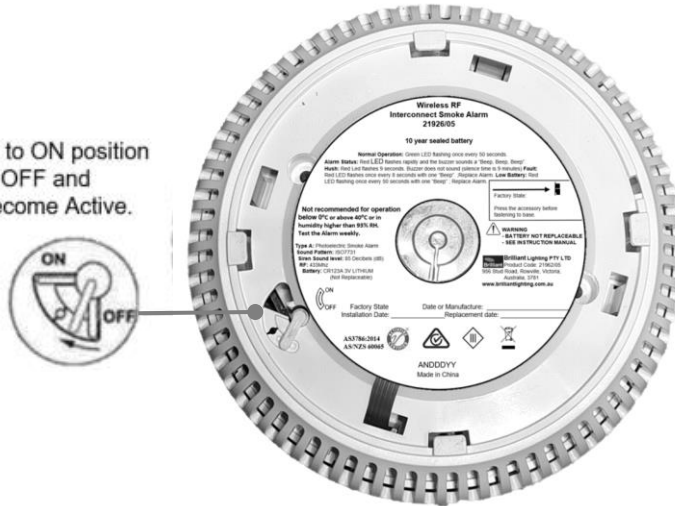
- In turbulent streams of air such as near fans, heaters, external door ways and windows, etc.
- Areas where temperature is below 0°C or exceeds 40°C and High Humidity areas including bathrooms, shower rooms, over kitchen appliance, sinks, etc.
- At the apex of an 'A' frame (Peak) ceiling.
- Less than 300mm from a wall when mounted on the ceiling.
- In insect-infested areas.
- In kitchens, laundry's, garages or boiler rooms.
- Dusty and dirty areas.
- Within 300mm of light fittings and room corners.
- Poorly insulated wall or ceilings.
- Near objects such as ceiling decorations.
- Within 1500mm of fluorescent light fittings.



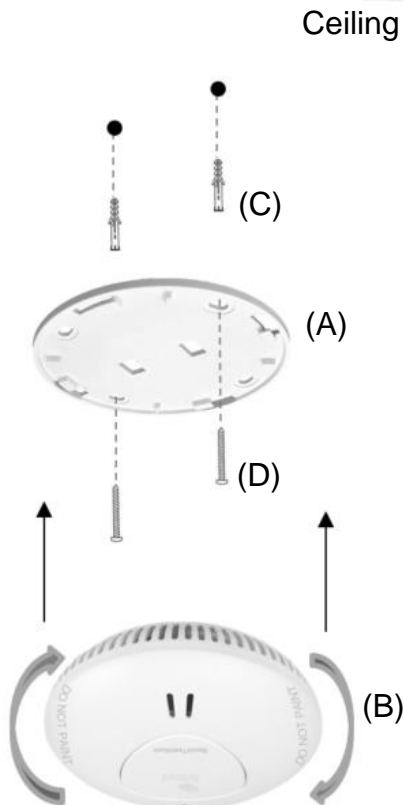
### INSTALLATION:

**Note\*** Do Not turn Wireless RF Interconnect Smoke Alarm to ON – the Wireless RF Interconnect Smoke Alarm will become Active once the installation process is completed.  
Installation date must be printed using permanent marker or stamp.

**Warning:** Switching to ON position turns factory setting OFF and Smoke Alarm will become Active.



**Warning:** Caution must be taken with ear/hearing protection. Once Wireless RF Interconnect Smoke Alarm becomes Active, the accidental press of the Reset/Test/Hush button may/will activate the Piezo Siren – this siren is very loud and may cause hearing damage if precautions are not taken.



1. Remove product and mounting hardware from packaging. Please dispose of packaging thoughtfully.
2. Disconnect the Surface Mounting Plate(A) from Smoke Alarm(B) by rotating anti-clockwise.
3. Using Surface Mounting Plate(A) as a template, mark and drill 2 x holes in the desired Ceiling location the Smoke alarm is to be mounted.
4. Insert 2 x Rawl Plugs(supplied) into the holes.(C)
5. Secure Surface Mounting Plate(B) with 2 x mounting screw(supplied).(D)
6. Line up Smoke Alarm(B) mounting tabs with Surface Mounting Plate(A) tabs.
7. Insert Smoke alarm into tabs and rotate Clockwise locking smoke alarm and Surface Mounting Plate firmly together. This process will also turn the Smoke Alarm on and now will be Active.



# WIRELESS RF INTERCONNECT SMOKE ALARM

## 21926/05

### Testing and Maintenance: For Single or Multiple Smoke Alarms

**Warning:** caution must be taken to ears/hearing when testing as Piezo Siren is loud.

The unit has been designed to be as maintenance free as possible. There are a few simple procedures that must be done to keep the Wireless RF Interconnect Smoke Alarm functioning correctly. Failure to adhere to these procedures may void warranty.

#### Testing:

Testing should be undertaken at least once a week. Keep at arms lengths to the smoke alarm during the test. Press Reset/Test/Hush Button for 0.1 second. The alarm will sound, press again to hush the Smoke Alarm.

#### Maintenance:

Clean the Smoke Alarm once a month. Gently vacuum the outside using a vacuum with a soft brush accessory. Never use Water, Cleaners or solvents as they may damage the internal Photoelectric Sensor. **(Warning: DO NOT Tamper or Modify this product)**

### Interconnect Pairing Mode Setup:

**Note\*:** This setup procedure is for all Brilliant Lighting Interconnect Smoke and Carbon Monoxide Alarms.

To connect multiple Wireless RF Interconnect Alarms follow the setup guide below.

We refer the Main Alarm as Primary Alarm.(this can be any of your Wireless RF Interconnect Smoke or Carbon Monoxide Alarms).All others will be referred as Secondary Alarms.

#### Primary Alarm

**Select an Alarm that will be the Primary Alarm.**

Press and hold Reset/Test/Hush Button and allow the LED indicator to flash **Green 3 times**.

The procedure will be as follows:

- Press and Hold the Reset/Test/Hush Button
- 1<sup>st</sup> Green LED Flash - no beep
- 2<sup>nd</sup> Green LED Flash - quick beep
- 3<sup>rd</sup> Green Led Flash - long beep.
- Release Reset/Test/Hush button.
- The LED indicator will now rapidly flash RED.

#### Secondary Alarm/s

Press and hold Reset/Test/Hush Button and allow the LED indicator to flash **Green 2 times**.

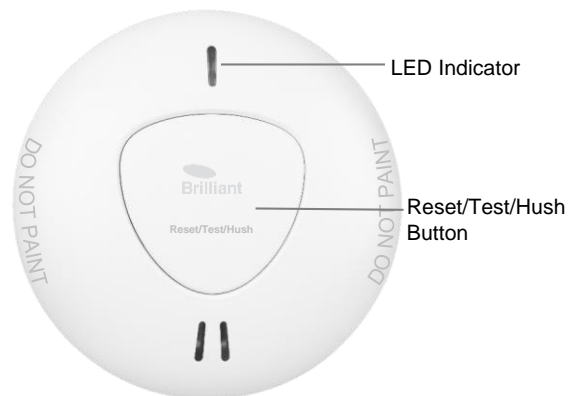
The procedure will be as follows:

- Press and Hold the Reset/Test/Hush Button
- 1<sup>st</sup> Green LED Flash - no beep
- 2<sup>nd</sup> Green LED Flash - quick beep
- Release Reset/Test/Hush button.
- The LED indicator will now slowly flash RED 3 times.

This is now paired to the Primary Alarm. **Repeat the these steps for multiple Smoke Alarms.**

Once all Secondary Smoke Alarms have gone through the pairing setup, press the Primary Smoke Alarm Reset/Test/Hush Button once to stop pairing procedure.

Note\* Pairing Mode on the Primary Smoke alarm may time out after **1 minute**. After this time if all Alarms have not been paired repeat the Interconnect Pairing Mode Setup.





# WIRELESS RF INTERCONNECT SMOKE ALARM

## 21926/05

### Testing Interconnectivity

To test the Interconnectivity of the Multiple Smoke alarms.

Press the Reset/Test/Hush button on any of your installed Wireless RF Interconnect Smoke alarms for 0.1 second.

The Piezo Siren will now sound. It can take up to 9 seconds for the Multiple Smoke Alarms to become Linked and Activated. (Note\* All Piezo Sirens must sound if interconnectivity between alarms has been successful.)

Do not press any Reset/Test/Hush button during this testing stage.

Allow Wireless RF Interconnect Smoke Alarms to complete the test procedure – procedure takes approximately 10-15 seconds.

**Warning:** The Piezo Siren is loud. Please take any precautions and use ear/hearing protection.

**Attention: Test the Wireless RF Interconnect Smoke Alarms monthly.**

### Clear Interconnect Pairing Mode

Please use below guide to remove interconnected smoke alarms.

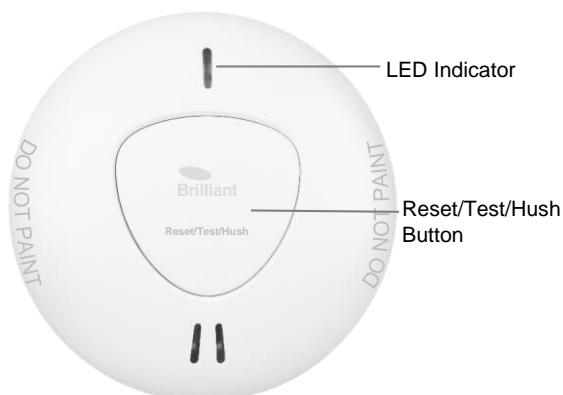
This procedure can also be used for troubleshooting if the first attempt to interconnect all your smoke alarms failed as at times products have been tested at factory level and may still be paired to a group. This is common practise and does not make the product faulty.

**Select a Smoke Alarm/s that will be removed from interconnected pairing mode.**

Sequence is as follows:

- Press and hold Reset/Test/Hush Button.
- 1<sup>st</sup> Green Flash - no beep
- 2<sup>nd</sup> Green Flash - quick beep
- 3<sup>rd</sup> Green Flash - long beep.
- 4<sup>th</sup> Green Flash - quick beep
- Release Reset/Test/Hush button.
- Long Beep
- 3 Green LED Flashes.

Wireless RF interconnect Smoke alarm is now disconnected to other interconnected Alarms. This alarm is still a functioning stand alone unit and will detect smoke in the event of a fire. testing and maintenance procedures must still be carried out weekly.







## **Fire Safety**

**WARNING:** Please read carefully and thoroughly.

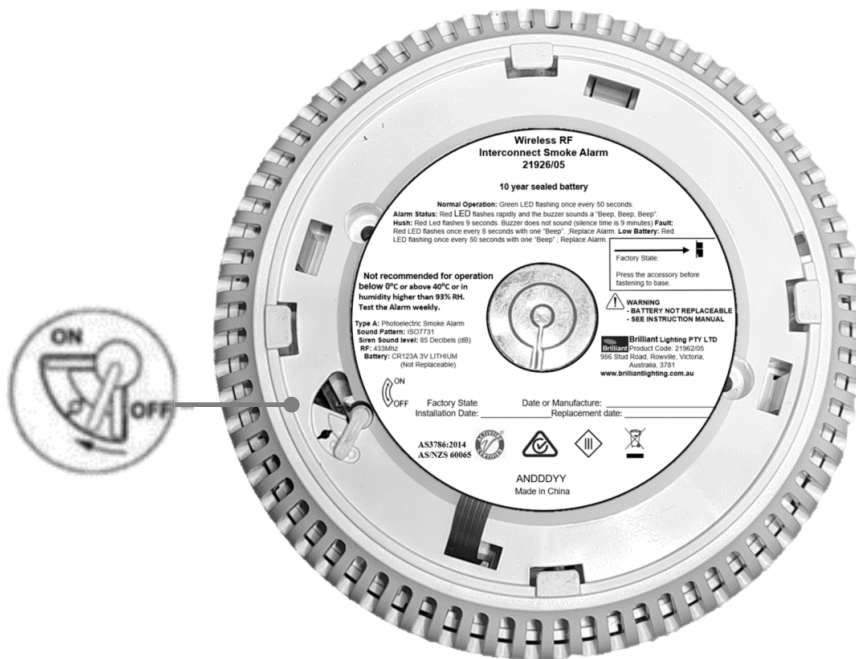
- Australian Standard AS 1670.6 states the purpose of installing smoke alarms is to provide early warning of a potentially life threatening condition and provide the maximum possible exit time.
- Smoke alarms have sensing limitations. Photoelectric sensing alarms may detect visible fire particles (associated with slow smouldering fires). Home fires develop in different ways and are often unpredictable. For maximum protection, photoelectric alarms should be installed.
- A battery powered alarm must have a battery of the specified type, in good condition and installed properly.
- AC powered alarms (without battery backup) will not operate if the AC power has been cut off, such as by an electrical fire or an open fuse.
- Smoke alarms must be tested regularly to make sure the batteries and the alarm circuits are in good operating condition. • Smoke alarms cannot provide an alarm if smoke does not reach the alarm. Therefore, smoke alarms may not sense fires starting in chimneys, walls, on roofs, on the other side of a closed door or on a different floor.
- If the alarm is located outside the bedroom or on a different floor, it may not wake up a sound sleeper.
- The use of alcohol or drugs may also impair ones ability to hear the smoke alarm. For maximum protection, a smoke alarm should be installed in each sleeping area on every level of a home.
- Although smoke alarms can help save lives by providing an early warning of a fire, they are not a substitute for an insurance policy. Home owners, landlords and tenants should have adequate insurance to protect their lives and property.
- There are situations where a smoke alarm may not be effective enough to protect against fire. For instance:
  - a) Smoking in bed
  - b) Leaving children home alone
  - c) Cleaning with flammable liquids such as petroleum, thinners or other combustible solvents.

**IMPORTANT:** This alarm is not designed to alert hearing impaired individuals.



### TROUBLESHOOTING

TROUBLE	PROBABLE CAUSE	SUGGESTED REMEDY
Wireless RF Interconnect Smoke Alarm will not silence while testing.	Test procedure still in process	Wait 10-15 seconds, if not silent remove unit from mounting plate and turn off at back of unit. Wait 15 seconds return unit to mounting plate. Follow test procedures.
	Reset/Test/Hush button pressed multiple times	Alarm time will be extended if button is pressed multiple times during testing procedure. This will be original time of 15 seconds and further time depending on how many times button pressed.
	Faulty unit	Fill warranty claim form for replacement. <a href="http://www.brilliantlighting.com.au">www.brilliantlighting.com.au</a> Proof of purchase required.
Wireless RF Interconnect Smoke Alarm triggered when occupants cooking or showering.	Alarm installed at incorrect location.	Refer to page 2, Installation Location. Clean Alarm – refer to page 4 Testing and Maintenance





# WIRELESS RF INTERCONNECT SMOKE ALARM

## 21926/05

### **INTERCONNECT SMOKE ALARM LIMITATIONS**

Interconnect Smoke alarms play a key role in reducing the number of injuries caused by fire and smoke in households worldwide. However, as with any alarm device, a Interconnect Smoke alarm will only issue an alarm indication if it is properly positioned , installed and maintained..

- Interconnect Smoke alarms may not alert everyone. Makes sure everyone, from children to the elderly, make sure to practice the escape plan at least twice a year. Let the children hold fire drills before going to bed at night to increase self-awareness. If a child or other person can not easily hear the sound of a Carbon Monoxide alarm, or if there are restrictions on movement by an infant or family member, make sure to assign someone to assist them in fire drills and emergency situations. It is recommended that you perform a fire drill while you family is sleeping to determine their response to the Carbon Monoxide alarm while they are sleeping and whether they need help in an emergency.
- Limited life of Interconnect Smoke alarm. If damage is caused by improper operation replace it immediately. **You should replace the Interconnect Smoke alarm 10 years from the date of Manufacturing.** See the label on the back of Interconnect Smoke alarm.  
Example: AN32521 is 325<sup>th</sup> day of 2021. Life time may vary due to storage condition of temperature and humidity.

### **Warranty**

Brilliant Lighting warrants this product against defects in manufacture and workmanship for a period of 5 years only for components and 10 years only for Lithium battery from date of purchase or as specified elsewhere. This warranty applies for this product use in a domestic and/or commercial applications. This warranty is only valid for products installed and operated within the guidelines specified by Brilliant Lighting and within the correct operating voltage ranges as stated on the product's rating label.

Warranty does not include damage or loss arising from incorrect installation, operation or maintenance of this product, damage caused through modification, incorrect installation, service by unqualified or unauthorised personnel or lack of regular maintenance and cleaning. Proof of installation by qualified personnel may be required, e.g. Electrical Safety Certificate. Proof of purchase must be supplied with all warranty claims.

This warranty is provided in addition to any other rights and remedies of the customer under any law. In applications not intended for household, personal or domestic use, liability is limited to replacement or reimbursement of product only. Brilliant Lighting does not warranty the costs of removal or re-installation of this product or associated components.

Our goods come with guarantees that cannot be excluded under the Australian Consumer Law. You are entitled to a replacement or refund for a major failure and compensation for any other reasonably foreseeable loss or damage. You are also entitled to have the goods repaired or replaced if goods fail to be of acceptable quality and the failure does not amount to a major failure.

Any claim under this warranty must be made within the specified warranty period from date of purchase of this product. To make a claim under the warranty; at your own expense take the product (with proof of purchase – receipt or similar) to the store where you purchased the product or contact Brilliant Lighting at the address below.

### **This warranty is given by:**

**Brilliant Lighting (Aust) Pty. Ltd.**

**ABN 37 006 203 694**

**956 Stud Road Rowville, VIC 3178**

**Phone: 03 9765 2555**

**Email: [warranty@brilliantlighting.com.au](mailto:warranty@brilliantlighting.com.au)**

**MADE IN CHINA**