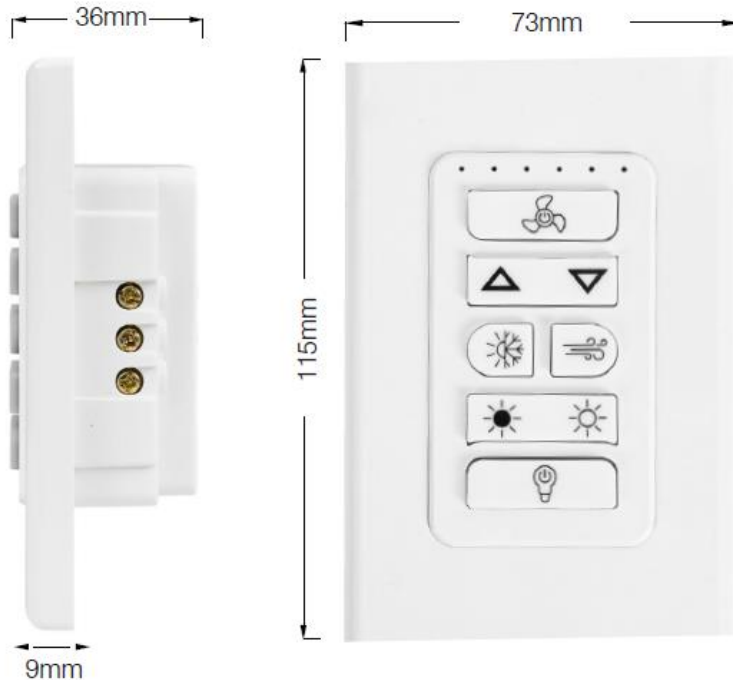


Congratulation on the purchase of your new Brilliant DC wall controller for ceiling fan. Before first using, it is most important that you read and follow these instructions, even if you feel you are quite familiar with this type of product. Keep this document handy for future reference.

THIS FITTING MUST BE INSTALLED BY A QUALIFIED ELECTRICAL CONTRACTOR in accordance with the latest AS/NZS 3000 and relevant amendments

FOR YOUR SAFETY

- To prevent electrical shock, please ensure that POWER is **DISCONNECTED** before installation.
- Do not install in a position where the fitting are cut into existing electrical wiring.
- Do not touch any LIVE parts of the assembly with bare hands during installation. Make sure POWER is OFF!
- Any alterations or additions to building wiring **must be completed by a licensed electrician** or person authorised by legislation to work on the fixed wiring of any electrical installation.



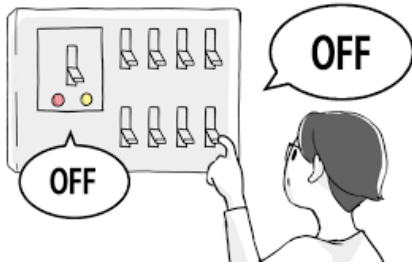
SPECIFICATION:			
**Input Voltage:	220-240V AC	Housing Material:	PC
Protection:	Class I	Dimensions:	73 mm x 115 mm x 36 mm
Control Type:	RF 433MHz	Distance:	Up to 10m from fan
Speed:	6 speed Max	ONLY USE this controller with ceiling fan :	<ul style="list-style-type: none"> • AMARI SII • VECTOR DC
Dimming:	STEP dimmable		
**NOTE : Isolation switch is recommended (not supplied)			

Before first using your new fitting, it is most important that you read and follow these instructions, even if you feel you are quite familiar with this type of product. Retain this document for future reference.

THIS FITTING MUST BE INSTALLED BY A QUALIFIED ELECTRICAL CONTRACTOR in accordance with the latest AS/NZS 3000 and relevant amendments

INSTALLATION

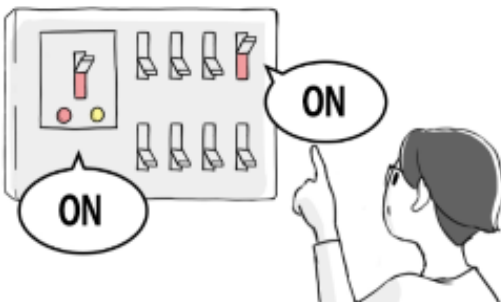
- 1) Ensure the Mains Supply is switched 'OFF'.



- 3) Cut the hole using a saw. Make sure do not cut into any electrical wiring behind the wall.



- 5) Turn the power back ON, and ready to pair to the fan receiver (see next step). Make sure fan is power ON too.



- 2) Using a C-Clip bracket (not supply), mark and draw the cutout hole on the wall.



- 4) Perform wiring according to **L-Active, N-Neutral & Earth (Ground) cable** to the terminal hole. Finish the installation by securing the wall controller to the bracket, and close the wall plate.



 **ACTIVE**
 **EARTH**
 **NEUTRAL**



- 6) Within few seconds after the power back ON, press and hold FAN OFF button on the controller, until you hear beep sound. The wall controller is ready to use.





DCWALLCONTROL WHITE

COMPATIBLE CEILING FAN MODEL:	
AMARI SERIES II	VECTOR DC
21719, 21721, 21723, 21725	22687, 22689, 22691, 22693, 22695, 22697

ENVIRONMENTAL PROTECTION:

This electrical product should not be disposed as normal waste. Please always recycle! Check with your Local Council about your recycle options.



Warranty:

Brilliant Lighting warrants this product against defects in manufacture and workmanship for a period of 2 years from date of purchase or as specified elsewhere. For products used in non-domestic or commercial applications, Brilliant Lighting warrants this product for a period of 3 months from date of purchase. This warranty is only valid for products installed and operated within the guidelines specified by Brilliant Lighting, and within the correct operating voltage ranges as stated on the product's rating label.

Warranty does not include damage or loss arising from incorrect installation, operation or maintenance of this product, damage caused through modification, incorrect installation, service by unqualified or unauthorised personnel or lack of regular maintenance and cleaning. Proof of installation by qualified personnel may be required, e.g. Electrical Safety Certificate. Proof of purchase must be supplied with all warranty claims.

This warranty is provided in addition to any other rights and remedies of the customer under any law. In applications not intended for household, personal or domestic use, liability is limited to replacement or reimbursement of product only. Brilliant Lighting does not warranty the costs of removal or re-installation of this product or associated components.

The warranty does not cover Ripple Control noise/interference (identified by a periodic or intermittent hum). This must be addressed with your energy service provider. The warranty does not cover noises or faults due to poor installation.

Our goods come with guarantees that cannot be excluded under the Australian Consumer Law. You are entitled to a replacement or refund for a major failure and compensation for any other reasonably foreseeable loss or damage. You are also entitled to have the goods repaired or replaced if goods fail to be of acceptable quality and the failure does not amount to a major failure.

Any claim under this warranty must be made within the specified warranty period from date of purchase of this product. To make a claim under the warranty; at your own expense take the product (with proof of purchase – receipt or similar) to the store where you purchased the product or contact Brilliant Lighting at the address below.

This warranty is given by:

Brilliant Lighting (Aust) Pty. Ltd.
ABN 37 006 203 694
956 Stud Road Rowville, VIC 3178
Phone: 03 9765 2555
Email: warranty@brilliantlighting.com.au
Web: www.brilliantlighting.com.au
MADE IN CHINA