



240V AC POWER PHOTOELECTRIC WIRED & WIRELESS INTERCONNECT SMOKE ALARM - 22653/05



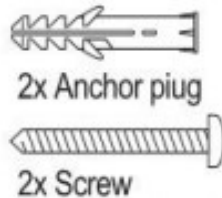
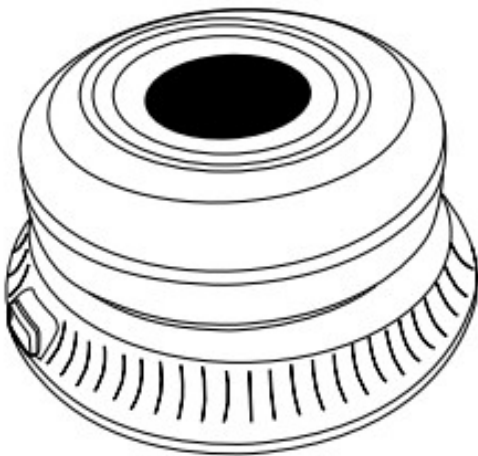
Before first using your new Alarm, it is most important that you read and follow these instructions, even if you feel you are quite familiar with this type of product. Keep this document for future reference. In an emergency of a fire dial 000(Australia only) dial 111(New Zealand Only)

MUST BE INSTALLED BY A LICENCED ELECTRICIAN

IMPORTANT for related operations, please read and keep this manual carefully.

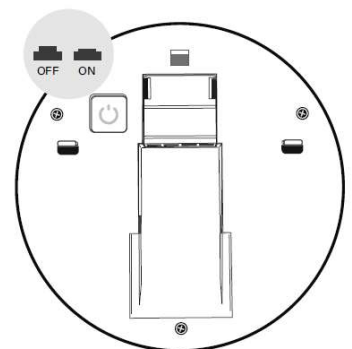
This manual contains important information about the operation of your Interconnect Smoke Alarm. If you install a Wireless RF Interconnect Smoke Alarm for someone else, be sure to leave this instruction or a copy of it with the end user. The Wireless RF Interconnect Smoke Alarm use's Photoelectric sensor which is harmless to the end user. Photoelectric Smoke alarms are effective in detecting smoke, as the smoke passes through the internal filter and interrupts the Photoelectric sensor beam it will enable the 85dB Piezo Siren to notify any occupants there is a fire.

WARNING: WIRELESS RF INTERCONNECT SMOKE ALARM MUST NOT BE MODIFIED OR TAMPERED WITH.



Gift box Contents	Quantity
Wireless RF Interconnect Smoke Alarm with Surface Mounting Plate	1
Instructions	1
Rawl Plugs	2
Mounting Screws	2

SPECIFICATIONS	
Standard	AS 3786:2014 ISO8201
Smoke Detection Type	Type A - (Photoelectric)
Mains Power Source	220 – 240V, 50Hz
Alarm Sound Level	>85dB/3m
Alarm Mode	LED & Buzzer
Working Voltage	DC 3V Lithium *10yr Life Battery- Non-Rechargeable (not replaceable)
Standby Power Consumption	< 0.2W
Operation Temperature	-10 °C – 50 °C
Ambient Humidity Range	< 95% RH
RF Frequency Range	433 MHz
No.of device's Interconnectable - Wireless	22 (Max)

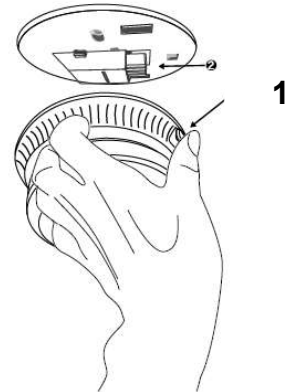


Turn factory setting off before using

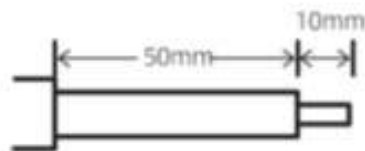
INSTALLATION:

This smoke alarm must be installed in accordance with the National Electrical Code and any local state legislation requirements. Failure to follow these instructions may result in a non-compliant installation.

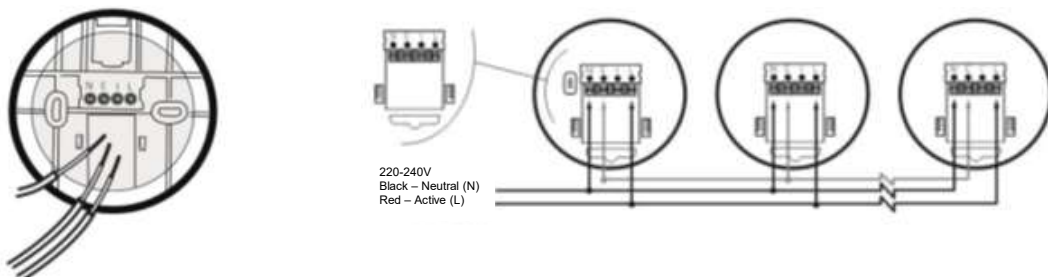
- 1) Disconnect the alarm module by pressing the pull button (1) and sliding the alarm off the base.



- 2) Strip the Active/ Neutral/ Earth wires back to the strip length shown.



- 3) Connect the wires to the correct terminals on the base and ensure the terminal screws are fully tightened.



- 4) Screw the mounting base onto the ceiling or wall using the plugs and screws included.
- 5) Slide the alarm module back onto the base. Attaching the base to the smoke alarm will switch on the smoke alarm automatically. Alternatively, you could turn on the smoke alarm via the On/Off switch before attaching the base.
- 6) Press the Test/Hush button to test the alarm. The test should last between 10 -15 seconds. Monthly testing is recommended.



Important Information

EQUIPMENT INSTALLATION HAZARD

- All interconnected smoke alarms must be supplied from the same circuit.
- A common Neutral must be used for the interconnection to work.
- DO NOT connect the interconnect wire to Active or Neutral.
- Only same manufactures smoke alarms can be interconnected.

WARNING : Failure to follow these instructions may result in equipment damage or injury.



CAUTION

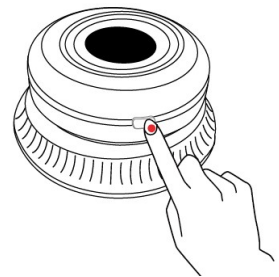
Alternative Energy Sources – (Wind, Solar, UPS etc) – This product is designed to be connected to a pure or true sine wave 230V AC supply.

It should not be connected to a power source that utilises an inverter e.g., PV solar panel.

This Alarm must not be powered from a light dimmer circuit.

Interconnecting Smoke Alarms

1. Interconnect smoke alarms via wireless RF- 433MHz. Alarms should be connected before installation.
2. Make sure to power on the smoke alarm before operation. Do not press any buttons prior to powering on.
3. Attaching the base to the smoke alarm will switch the alarm on automatically. Alternatively, you could turn on the smoke alarm via the On/Off switch.
4. Choose one smoke alarm as your “master” alarm.
5. Press and hold the Test/ Hush button of the “master” alarm for three seconds until the indicator light starts flashing.
6. After the third flash accompanied by a long beep, release the button to enter pairing mode.
7. Confirm pairing mode by looking at the indicator light, the indicator light should be rapidly flashing red. This
8. Alarm will now await the connection of the other devices. It will remain in pairing mode until cancelled. To cancel pairing mode, press the Test/ Hush button again.
9. Press and hold the Test/ Hush button of the second device for three seconds until the indicator light starts flashing.
10. After the second flash accompanied by a short beep, release the button to pair to the “master” alarm.
11. The pairing will be successful if the indicator light flashes red three times accompanied by a long beep.
12. If the device is currently in a pairing group, it will flash red with three short beeps. If you wish to pair this device to a new group, you will need to first clear the paired data.
13. To clear the paired data, press and hold the Test/ Hush button for three seconds until the indicator light starts flashing, Release the button after four flashes with a short beep. When the device has cleared the data successfully; it will issue a long beep and the indicator light will slowly flash green three times.



14. Press the Test/Hush button to check the alarm still works. The test should last 10-15 seconds. Monthly testing is recommended.

INSTALLATION LOCATION

Note*: This is a Guide only – Always seek professional advice from your local Government or emergency services.

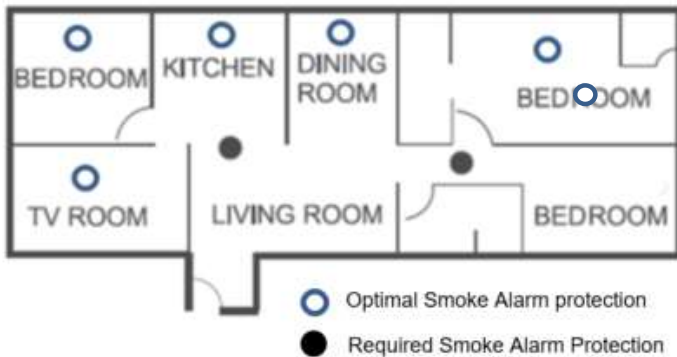
Smoke alarms to be:

- Installed inside or outside each sleeping area; and
- Installed on each storey in a multi-storey home, located in the path that people will use to evacuate.

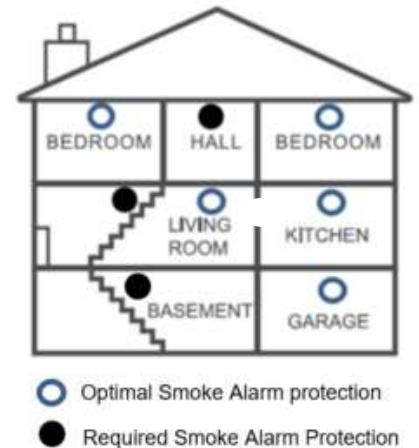
Note* multiple smoke alarms are recommended for optimal protection from fire or smoke.

ATTENTION: For optimum smoke detection, it is recommended that each smoke alarm is placed on the ceiling, close to the centre of the room, and at least 300mm(30cm) away from the wall. Smoke alarms MAY NOT operate in areas known as dead air space. This is where walls and ceilings meet. Keep away from installing in these areas.

Single Story Dwelling



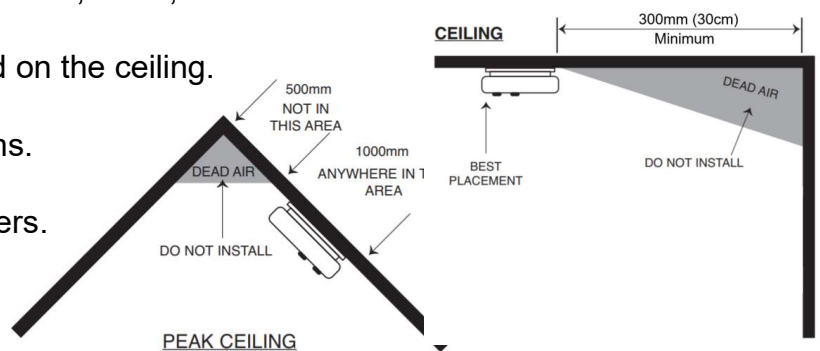
Double Story dwelling



Locations to Avoid:

DO NOT install Wireless RF Interconnect Smoke Alarm in the following locations.

- In turbulent streams of air such as near fans, heaters, external doorways and windows, etc.
- Areas where temperature is below 0°C or exceeds 40°C and High Humidity areas including bathrooms, shower rooms, over kitchen appliance, sinks, etc.
- At the apex of an 'A' frame (Peak) ceiling.
- Less than 300mm from a wall when mounted on the ceiling.
- In insect-infested areas.
- In kitchens, laundry's, garages or boiler rooms.
- Dusty and dirty areas.
- Within 300mm of light fittings and room corners.
- Poorly insulated wall or ceilings.
- Near objects such as ceiling decorations.
- Within 1500mm of fluorescent light fittings.





240V AC POWER PHOTOELECTRIC WIRED & WIRELESS INTERCONNECT SMOKE ALARM - 22653/05



TESTING & CLEANING:

This unit has been designed to be as maintenance-free as possible, but there are a few things you must do to keep it functioning properly.

Test each alarm at least once a month. Keep at arm's length distance to the alarm during the test. The alarm is loud in order to alert you in case of emergency, and it can be harmful to your ears.

Press the Test/Hush button for a duration of 0.1 seconds. The alarm will sound for a few short, loud beeps. Upon releasing the button, the sound will stop.

Clean the smoke alarm at least once a month. Gently vacuum the outside of the smoke alarm using your household vacuum's soft brush accessory. Test the smoke alarm after cleaning. Never use water, cleaners or solvents since they may damage the unit.

If the smoke alarm becomes contaminated by excessive dirt, dust and/or grime, and gives unwanted alarms, replace the unit immediately.

FUNCTION DESCRIPTION:

Low voltage alarm: When the built in battery voltage of the smoke detector is below 2.6V, the red indicator light will flash once every 60 seconds, accompanied by an "D" sound.

Smoke Alarm Fault: The yellow LED of the smoke alarm flashes once every 60 seconds and is accompanied by a twice "D" sound.

If the device operates normal, the green LED indicator flashes once about every 60 seconds.

PRODUCT LIMITATIONS:

Smoke alarms have played a key role in reducing deaths resulting from home fires worldwide. However, like any warning device, smoke alarms can only work if they are properly located, installed and maintained, and if smoke can reach the alarms. Smoke alarms may not wake all individuals.

Smoke alarms cannot detect fires if the smoke does not reach the alarm. Smoke from fires in chimneys or walls, on roofs or on the other side of closed doors may not reach the bedroom or sleeping area especially if the bedroom or sleeping area doors are closed at night.

Smoke alarms may not have time to sound before the fire itself causes damage, injury, or death, since smoke from some fires may not reach the unit immediately. Examples of this include persons smoking in bed, children playing with matches, or fires caused by violent explosions resulting from escaping gas.



240V AC POWER PHOTOELECTRIC WIRED & WIRELESS INTERCONNECT SMOKE ALARM - 22653/05



Smoke alarms are not foolproof. Like any electronic device, smoke alarms are made of components that can wear out or fail at any time. You must test the unit monthly to ensure your continued protection. Smoke alarms cannot prevent or extinguish fires. They are not a substitute for property or life insurance.

Smoke alarms have a limited life. The unit should be replaced immediately if it is not operating properly. You should always replace a smoke alarm after 10 years from the date of purchase. Write the purchase date on the space provided on the back of the unit.

TROUBLESHOOTING

TROUBLE	PROBABLE CAUSE	SUGGESTED REMEDY
Wireless RF Interconnect Smoke Alarm will not silence while testing.	Test procedure still in process	Wait 10-15 seconds, if not silent remove unit from mounting plate and turn off at back of unit. Wait 15 seconds return unit to mounting plate. Follow test procedures.
	Reset/Test/Hush button pressed multiple times	Alarm time will be extended if button is pressed multiple times during testing procedure. This will be original time of 15 seconds and further time depending on how many times button pressed.
	Faulty unit	Fill warranty claim form for replacement. www.brilliantlighting.com.au Proof of purchase required.
Wireless RF Interconnect Smoke Alarm triggered when occupants cooking or showering.	Alarm installed at incorrect location.	Refer to page 2, Installation Location. Clean Alarm – refer to page 4 Testing and Maintenance



Fire Safety

WARNING: Please read carefully and thoroughly.

- Australian Standard AS 1670.6 states the purpose of installing smoke alarms is to provide early warning of a potentially life-threatening condition and provide the maximum possible exit time.
- Smoke alarms have sensing limitations. Photoelectric sensing alarms may detect visible fire particles (associated with slow smouldering fires). Home fires develop in different ways and are often unpredictable. For maximum protection, photoelectric alarms should be installed.
- A battery powered alarm must have a battery of the specified type, in good condition and installed properly.
- AC powered alarms (without battery backup) will not operate if the AC power has been cut off, such as by an electrical fire or an open fuse.
- Smoke alarms must be tested regularly to make sure the batteries and the alarm circuits are in good operating condition. • Smoke alarms cannot provide an alarm if smoke does not reach the alarm. Therefore, smoke alarms may not sense fires starting in chimneys, walls, on roofs, on the other side of a closed door or on a different floor.
- If the alarm is located outside the bedroom or on a different floor, it may not wake up a sound sleeper.
- The use of alcohol or drugs may also impair one's ability to hear the smoke alarm. For maximum protection, a smoke alarm should be installed in each sleeping area on every level of a home.
- Although smoke alarms can help save lives by providing an early warning of a fire, they are not a substitute for an insurance policy. Homeowners, landlords and tenants should have adequate insurance to protect their lives and property.
- There are situations where a smoke alarm may not be effective enough to protect against fire. For instance:
 - a) Smoking in bed
 - b) Leaving children home alone
 - c) Cleaning with flammable liquids such as petroleum, thinners or other combustible solvents.

IMPORTANT: This alarm is not designed to alert hearing impaired individuals.



240V AC POWER PHOTOELECTRIC WIRED & WIRELESS INTERCONNECT SMOKE ALARM - 22653/05



Warranty

Brilliant Lighting warrants this product against defects in manufacture and workmanship for a period of 5 years only for components and 10 years only for Lithium battery from date of purchase or as specified elsewhere. This warranty applies for this product use in a domestic and/or commercial applications. This warranty is only valid for products installed and operated within the guidelines specified by Brilliant Lighting and within the correct operating voltage ranges as stated on the product's rating label.

Warranty does not include damage or loss arising from incorrect installation, operation or maintenance of this product, damage caused through modification, incorrect installation, service by unqualified or unauthorised personnel or lack of regular maintenance and cleaning. Proof of installation by qualified personnel may be required, e.g. Electrical Safety Certificate. Proof of purchase must be supplied with all warranty claims.

This warranty is provided in addition to any other rights and remedies of the customer under any law. In applications not intended for household, personal or domestic use, liability is limited to replacement or reimbursement of product only. Brilliant Lighting does not warranty the costs of removal or re-installation of this product or associated components.

Our goods come with guarantees that cannot be excluded under the Australian Consumer Law. You are entitled to a replacement or refund for a major failure and compensation for any other reasonably foreseeable loss or damage. You are also entitled to have the goods repaired or replaced if goods fail to be of acceptable quality and the failure does not amount to a major failure.

Any claim under this warranty must be made within the specified warranty period from date of purchase of this product. To make a claim under the warranty; at your own expense take the product (with proof of purchase – receipt or similar) to the store where you purchased the product or contact Brilliant Lighting at the address below.

This warranty is given by:

Brilliant Lighting (Aust) Pty. Ltd.
ABN 37 006 203 694
956 Stud Road Rowville, VIC 3178
Phone: 03 9765 2555
Email: warranty@brilliantlighting.com.au
MADE IN CHINA