



# SEEMA Linear Pendant

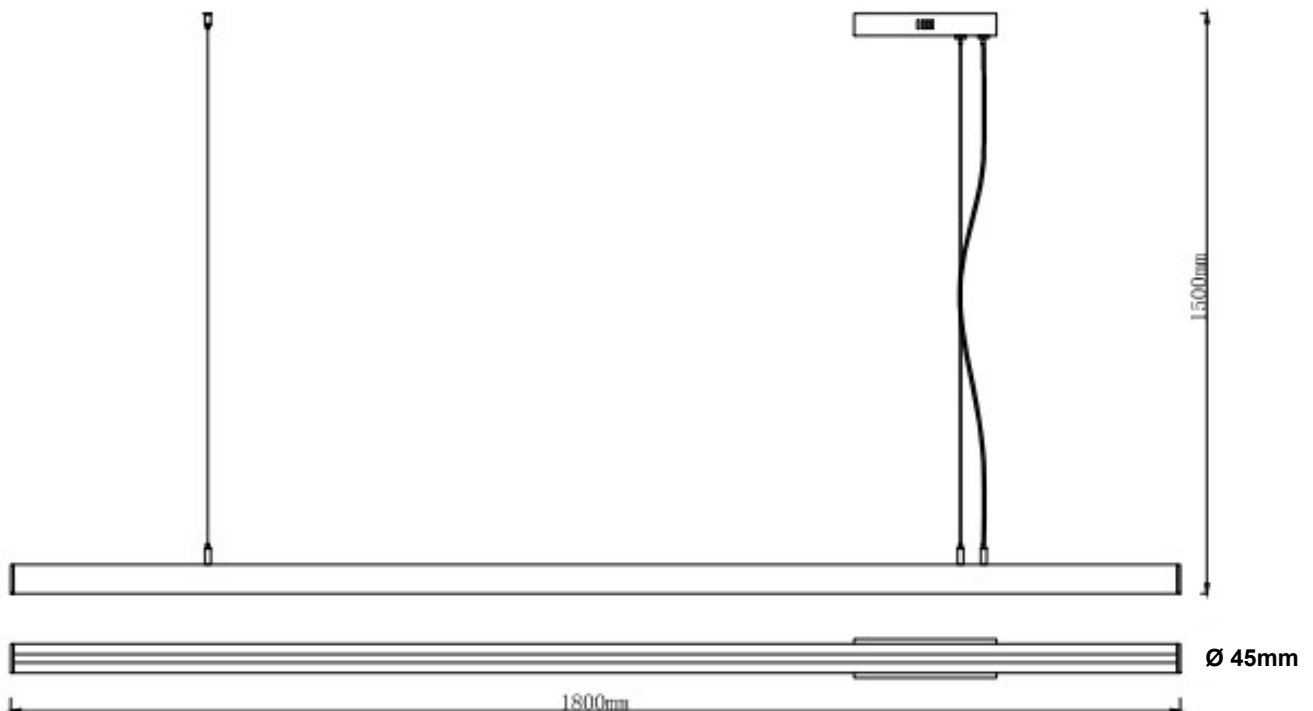
## 22810/06 – Matt Black

Before using your new Brilliant SEEMA Linear Pendant, it is most important that you read and follow these instructions, even if you feel you are quite familiar with this type of product. Keep this document handy for future reference.

**THIS FITTING MUST BE INSTALLED BY A QUALIFIED ELECTRICIAN**

### WARNING:

- Indoor use only.
- Before cleaning make sure the power to the pendant is switched off.
- Use a soft cloth to clean the pendant.
- DO NOT use corrosive cleaners to clean the pendant.
- Ensure your ceiling structure is capable to support the weight of the pendant



### SPECIFICATIONS:

**Fitting:** Ceiling Pendant  
**Voltage:** 220-240V AC 50Hz  
**Power :** 30W Max – Constant Current Driver  
**Construction:** Class I  
**Weight:** 2.8kg  
**Adjustable suspension cord length :** 1.5m max  
**Colour Temperature:** 2900K (750lm), 4000K (800lm), 6000K (790lm)



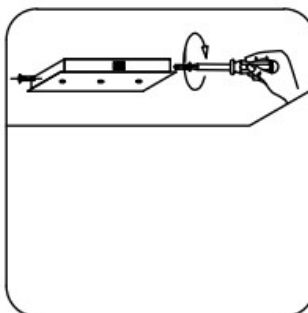
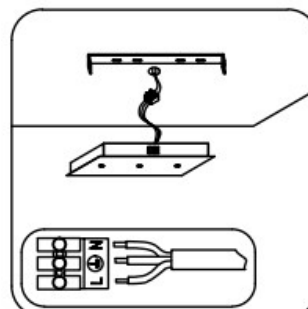
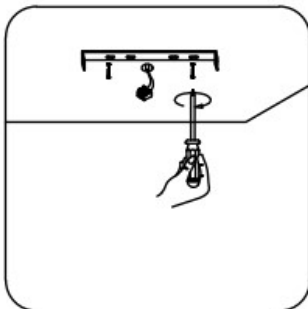
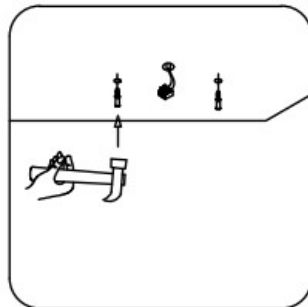
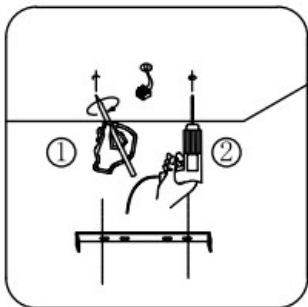
# SEEMA Linear Pendant

## 22810/06 – Matt Black

Before using your new Brilliant SEEMA Linear Pendant, it is most important that you read and follow these instructions, even if you feel you are quite familiar with this type of product. Keep this document handy for future reference.

**THIS FITTING MUST BE INSTALLED BY A QUALIFIED ELECTRICIAN**

### INSTALLATION INSTRUCTIONS



- 1) Ensure the power is switched off at the mains.
- 2) Remove all packaging material from the product and be careful not to throw away accessories that may be hidden within the packaging material. If assembly is required, place the luminaire on a smooth non-scratch surface.
- 3) Remove the mounting bracket from the canopy by loosening the screws on the side.
- 4) Use the mounting bracket as a template to mark the screw positions on the ceiling.
- 5) Install the mounting bracket onto the ceiling by using appropriately sized mounting screws and anchors. Ensure the screws and anchors used are suitable for the mounting surface and the surrounding environment.
- 6) Remove the hanger bracket from the hanger on the other side of the luminaire.
- 7) Install the hanger bracket onto the ceiling by using appropriately sized mounting screws and anchors. Ensure the screws and anchors used are suitable for the mounting surface and the surrounding environment.
- 8) Connect the mains supply wire to the terminal block. Earth (Yellow/Green), Live (Brown), Neutral (Blue).
- 9) Install the canopy onto the mounting bracket and secure by tightening the screws on the sides.
- 10) The luminaire suspension length can be adjusted by loosening the cord anchorage. When adjust the suspension length, adjust the buckle and the wire accordingly.
- 11) After the installation is complete, switch on mains supply to power the luminaire. Enjoy your new Pendant Light.



# SEEMA Linear Pendant

## 22810/06 – Matt Black

### Warranty:

Brilliant Lighting warrants this product against defects in manufacture and workmanship for a period of 2 years from date of purchase or as specified elsewhere. For products used in non-domestic or commercial applications, Brilliant Lighting warrants this product for a period of 3 months from date of purchase. This warranty is only valid for products installed and operated within the guidelines specified by Brilliant Lighting, and within the correct operating voltage ranges as stated on the product's rating label.

Warranty does not include damage or loss arising from incorrect installation, operation or maintenance of this product, damage caused through modification, incorrect installation, service by unqualified or unauthorised personnel or lack of regular maintenance and cleaning. Proof of installation by qualified personnel may be required, e.g. Electrical Safety Certificate. Proof of purchase must be supplied with all warranty claims.

This warranty is provided in addition to any other rights and remedies of the customer under any law. In applications not intended for household, personal or domestic use, liability is limited to replacement or reimbursement of product only. Brilliant Lighting does not warranty the costs of removal or re-installation of this product or associated components.

*Our goods come with guarantees that cannot be excluded under the Australian Consumer Law. You are entitled to a replacement or refund for a major failure and compensation for any other reasonably foreseeable loss or damage. You are also entitled to have the goods repaired or replaced if goods fail to be of acceptable quality and the failure does not amount to a major failure.*

Any claim under this warranty must be made within the specified warranty period from date of purchase of this product. To make a claim under the warranty; at your own expense take the product (with proof of purchase – receipt or similar) to the store where you purchased the product or contact Brilliant Lighting at the address below.

This warranty is given by:

**Brilliant Lighting (Aust) Pty. Ltd.**  
**ABN 37 006 203 694**  
**956 Stud Road Rowville, VIC 3178**  
**Phone: 03 9765 2555**  
**Email: [Warranty@brilliantlighting.com.au](mailto:Warranty@brilliantlighting.com.au)**  
**MADE IN CHINA**